



Questionnaire



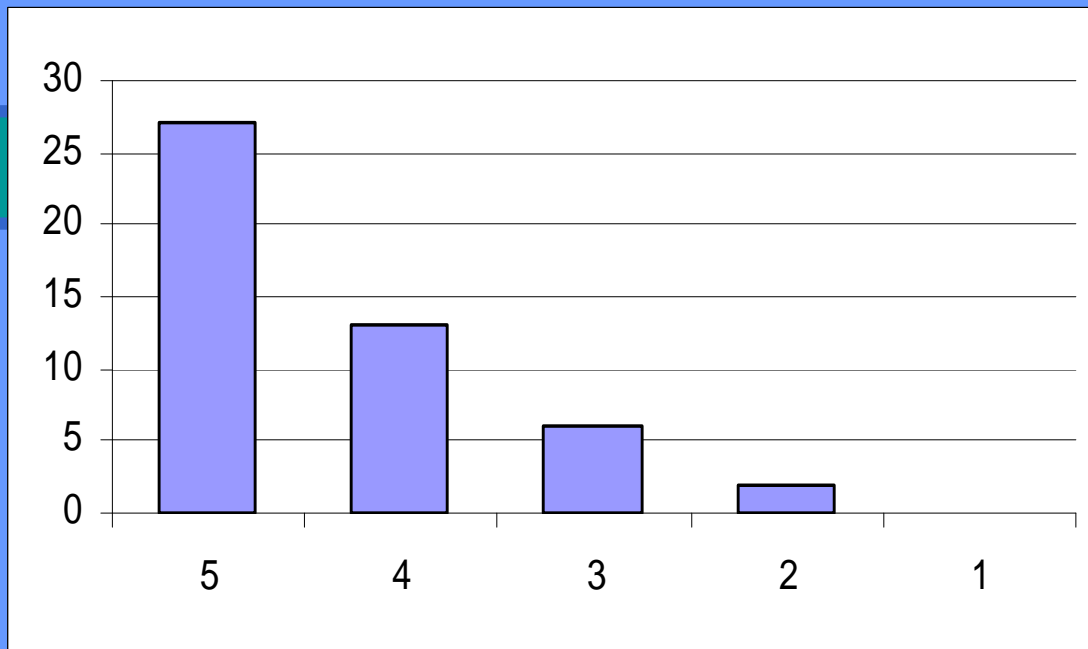
N.E.T.WORK



Questionnaire has been taken among
48 gymnasium teachers.



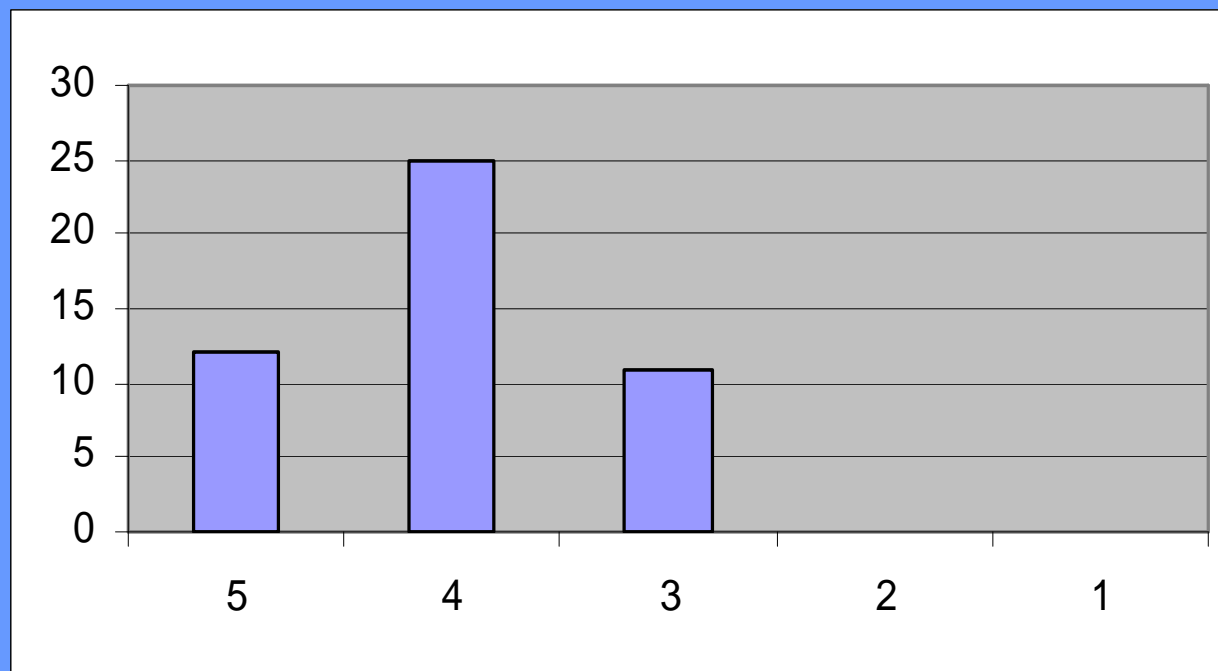
1. The importance of the relation with family in my professional role:



Relations with families are important for over 83% of our respondents (48 persons).




2. Your level of satisfaction about the relation with families in your work:



3. Describe **positive aspects** in the relation with families in your personal professional experience:

1. solving child's problems together with family ;
2. better exchange of information that concerns a child;
3. getting familiar with home situation of a child enables teachers to understand child's school problems in a better way;
4. improvement of a child's attendance record, making progress in learning;
5. better effectiveness in improving poor and unclassified grades (fails);
6. better control over a child's behaviour;
7. direct contact between teachers and parents enables better cooperation between school and a child's home.






Most of our respondents (21 persons)
chose first answer:



*"Solving child's problems together with
family"*

5 persons shared the 3rd answer and 3
persons shared the 4th one.



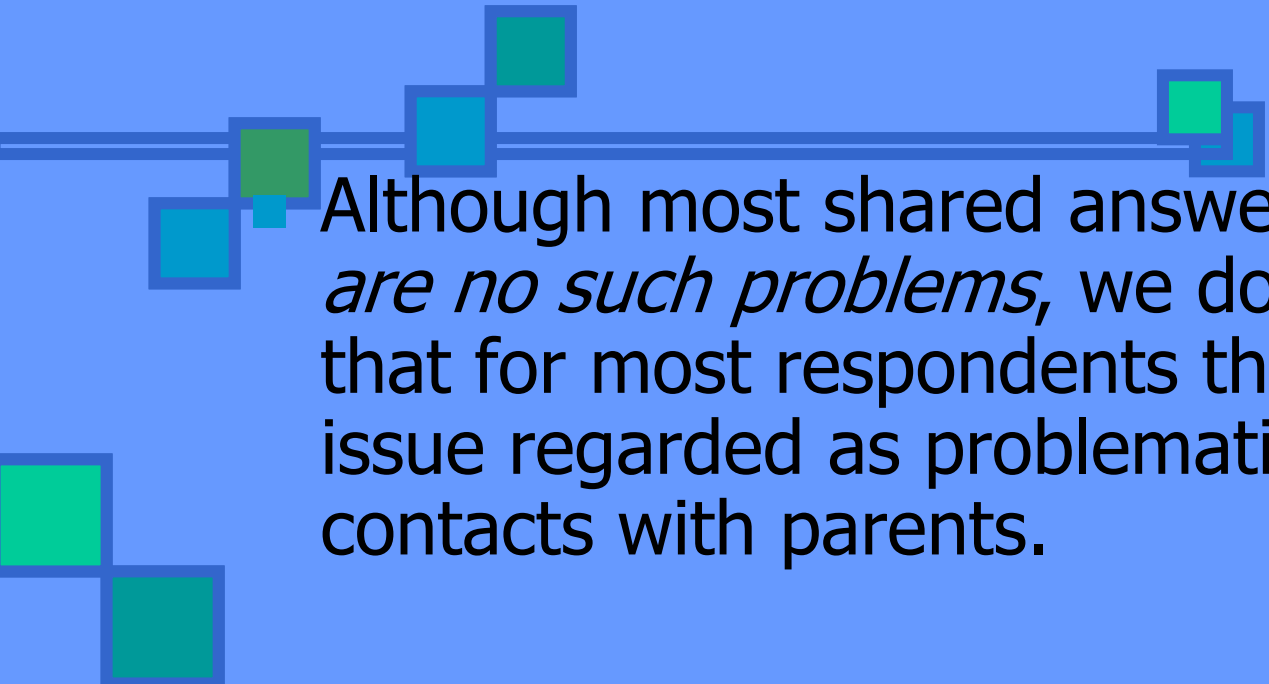
It means that being in contact with parents
is significant for most teachers.



4. For which kind of issues, you find more difficulties to talk about with families:

1. there are no such problems – 12 persons;
2. sexual behaviours – 8 persons;
3. negative behaviours – 9 persons;
4. emotional problems – 9 persons;
5. other:
 - parents being too permissive towards their child's behaviour;
 - parents making excuses for their child's truancy;
 - family problems that have an effect on a child's behaviour in school;
 - lack of parents' openness and receptiveness;
 - parents avoiding difficult issues and subjects (brushing aside problems);
 - parents being reluctant to talk about home problems;
 - personal hygiene of a child.





Although most shared answer was: *there are no such problems*, we don't really agree that for most respondents there are no any issue regarded as problematic in their contacts with parents.

In our opinion, answer mentioned above, although most shared, is very subjective, depends on individual perception and may be too optimistic.

In fact, most respondents indicated they need a support in various fields regarded as very difficult.



5. If you have a chance to participate in a course about your relationship with parents, which **subjects** could you choose?

- | | | |
|---|-----------|------|
| 1. How to involve and motivate families to meet you | 1. YES 38 | NO 2 |
| 2. How to prevent and cope aggressive behaviours of parents | 2. YES 32 | NO 6 |
| 3. How to solve conflicts with parents | 3. YES 24 | NO 4 |
| 4. How to give in a positive way difficult issues | 4. YES 24 | NO 0 |
| 5. How to give families opportunities to participate at school life | 5. YES 16 | NO 8 |
| 6. How to manage your negative feelings towards parents and develop positive approach | 6. YES 16 | NO 6 |
| 7. How to reach a cooperative relation with parents | 7. YES 10 | NO 8 |
| 8. Other topics: | | |
| ■ How to motivate students to learn; | | |
| ■ What kind of help can be given to parents from various institutions (financial and legal help); | | |
| What kind of institutions can give such support; How to gain such support. | | |



6. If you have a chance to participate in a course about your relationship with parents, which **tools** could you choose?

Written Scripts

YES 24 NO 2

Active methods (drama...)

YES 10 NO 6

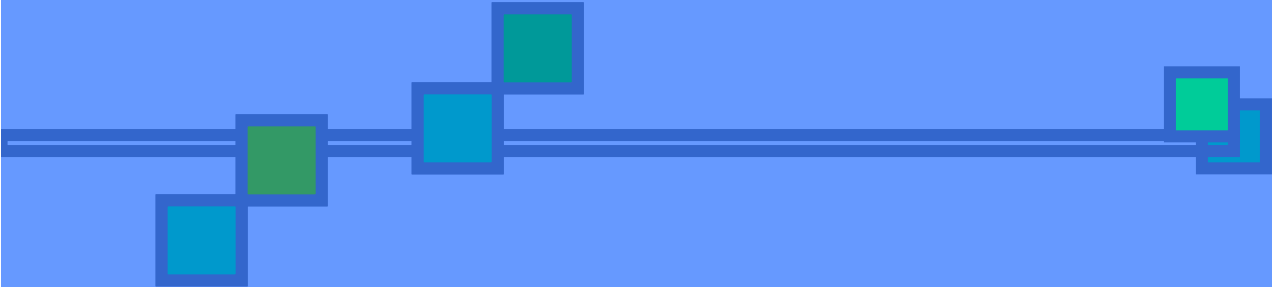
Case studies

YES 34 NO 2

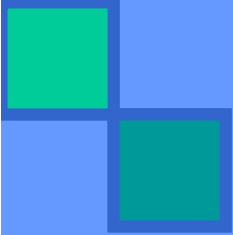
Additional materials (extracts from films, references...)

YES 34 NO 3





In our opinion questions no. 5 and 6 are the most important, because they give us the answer about what kind of support teachers expect from us.



They need scripts, case studies, active methods and other additional materials (films, books etc.)

